

# WOLVES

## WOLVES v SWINDON TOWN

Saturday 21st September 1991

Price £1.00



CLUB SPONSORS

**GOODYEAR**





**President:** Sir Jack Hayward  
O.B.E.

**Chairman:** J. A. Harris

**Directors:** Jonathan  
Hayward, W. Wright C.B.E.,  
John Harris, Nic Stones

**Manager:** Graham Turner

**Coach:** Gary Pendry

**Youth Team Coach:**  
Chris Evans

**Secretary:** Keith Pearson  
A.C.I.S.

**Commercial Manager:**  
Keith Butler

**Assistant Secretary:**  
Dot Wooldridge

**Reception:** Claire Hughes,  
Sarah Bradley

**Marketing Manager:**  
Gary Leaver

**Lottery Manager:** Dave Cox

**Lottery Administration:**  
Brenda Clitheroe

**Commercial Assistant:**  
Joanne Bradshaw

**Ticket Office Manager:**  
Mel Bird

**Ticket Office:** Suzanne  
Timmins, Alison Hemming

**Shop:** Joanne Hancock,  
Diane Harris

**Physiotherapist:** Paul Darby

**Chief Scout:** Ron Jukes

**Medical Officers:** Dr.  
Tweedall & Dr. Bekkenn.

**Club Patron:** Manders  
Holdings plc

## • HONOURS •

**Football League:** Division 1 —  
Champions 1953-54, 1957-58,  
1958-59; Runners-up 1937-38,  
1938-39, 1949-50, 1954-55,  
1959-60; Division 2 —

Champions 1931-32, 1976-77;  
Runners-up 1966-67, 1982-83;  
Division 3 (N) — Champions

1923-24; Division 3 —  
Champions 1988-89; Division

4 — Champions 1987-88, **FA**

**Cup:** Winners 1893, 1908,  
1949, 1960; Runners-up 1889,

1896, 1921, 1939. **Football**

**League Cup:** Winners 1973-  
74, 1979-80. **Texaco Cup:**

1970-71; **Sherpa Van Trophy:**  
Winners 1988. **European**

**Competitions:** **European**  
**Cup:** 1958-59, 1959-60.

**European Cup-Winners' Cup:**  
1960-61. **UEFA Cup:** 1971-72

(runners-up), 1973-74, 1974-  
75, 1980-81.

**Wolverhampton Wanderers (1986)**  
**Ltd., The Molineux Ground,**

**Waterloo Road, Wolverhampton**  
**WV1 4QR Telephone (0902) 712181**

**Commercial Dept. (0902) 23166**

The views expressed in *Molineux* are  
not necessarily those of the club.

*Molineux*. Produced in the  
Black Country by Paper Plane

Publishing Ltd (0384) 410531  
and printed by Croyley  
Print Ltd.

## LEASE AT LAST

At long last, after months of difficult negotiations and plenty of hard work by both Wolves and The Council, on Wednesday night a meeting of the council ratified a report from the Policy and Resources Committee that suggested the granting of a lease to a new company, owned by Sir Jack Hayward, "who will be responsible for providing the necessary funds to redevelop the stadium."

The new lease is for a term of 125 years with an option to renew for 60 years, at the end of which there will be an option to purchase as well.

This is the news that all Wolves fans have been waiting for for so long, and now gives the green light for developments to go ahead in full.

At the meeting, leader of the Labour group Norman Davies, said "If we hadn't intervened in 1986 there wouldn't be a Molineux. If The Council had had the money then we would have undertaken the redevelopment, however, the deal with Sir Jack Hayward is an excellent one."

Indeed, it's hard to see how the future of Molineux as a home for Wolves could have been secured without the magnanimity of 'Union Jack'. As Chairman Jack Harris puts it "Without his help we would never have been able to contemplate the redevelopment, I just wouldn't know where we could go to raise that sort of money."

"Sir Jack never needed any persuading to get involved with Wolves. He wouldn't have been interested in any other club, he's Wolves through and through."

Recognising the enormous contribution Sir Jack has made to the future of the club, The Chairman joked "we should call it Hayward Stadium, never mind Molineux!"

Muriel Bates of the Wolves Supporters Club expressed her delight at the news, "It's what we've been waiting for for so long," she told *Molineux*. "Sir Jack is an angel for what he's done in bringing Molineux back where it belongs, under the control of Wolves. Having a new stadium will be great for the fans and help to restore pride in the town."

Undoubtedly the move will be a boost to the fans, but the staff will also be lifted by the news.

Graham Turner has long recognised the difficulties having a stunted stadium have created for his players, and Club Secretary Keith Pearson, who has been at Wolves through some of the worst years of their history is also delighted.

"It will be a real boost for the staff, it won't be long now before we have a better working environment. It's tremendous news for the fans after so many years of promises we now have some action. This time next year we will definitely have a new North Bank in use and work should have started on the new Waterloo Road Stand."

So as another chapter in the long history of Wolverhampton Wanderers begins, the club owe an enormous debt of gratitude to Sir Jack Hayward, but no doubt he would echo the Chairman's words on Thursday. "All I want now is to see the stadium built."

## HAPPY BIRTHDAY SPOT!

Last weekend was the anniversary of the first ever penalty, awarded to Wolves 100 years ago, and although there haven't been too many here in recent years, we've decided to celebrate the anniversary with a special penalty competition today.

Four teams are going to be battling it out for a superb Waterford Crystal trophy presented by Jim Hickman of sponsors Cook & Hickman solicitors of Gloucester.

Goalkeeper Paul Jones will be facing spot kicks from 'Wolves 1891' — Tony Butler and Steve Daley. (No doubt Wolves fans will want to let Mr Butler know what they think of his footballing abilities as he lets everyone know what he thinks of Wolves on his Radio WM show). 'Accrington Stanley' — Andy Moston and Ernie Hunt. 'Wolves Ladies' — Jenny Wilkes and Rachael Heyhoe-Flint and a 'Wolves Strollers' side of two surprise guests.

All of the players will take three penalties each before this afternoon's game, and at half time they will each take one more spot kick. The team with the highest total being the victors.

Here are a few facts you may not know, about the penalty kick.

- Geoff Palmer of Wolves scored a penalty in the first minute of the first match of the 1982-3 season, against Liverpool, and didn't score again all season.

- There have only been seven penalties in F.A. Cup Finals since they moved to Wembley in 1923.

- On 21 November 1964 Plymouth's John Newman, taking a penalty against Manchester City, rolled the ball forward about a yard and Mike Trebilcock, following up, shot into the net. That gave Argyle an equaliser at 2-2, and they later went on to win 3-2. "It seemed like a good idea", said Newman later.

- Sheffield Wednesday full-back Norman Curtis replaced injured goalkeeper Dave McIntosh during a match at Preston in 1953, and stopped two penalties — one from Tom Finney, the other from Jimmy Baxter. Wednesday still lost 6-0.

- Alan Slough of Peterborough scored a hat-trick of penalties in an away game in April 1978, but finished on the losing side. Chester won 4-3.

- Everton full-back Willie Cook scored only five goals for the club — three of them penalties in the space of four days over Christmas 1938.

## YOU BET

The Ladbrokes betting office is now open in the upper concourse of the John Ireland Stand. If you fancy a flutter on today's game then you will find the odds being offered on various bets on today's stats page.

The new facility is experimental at the moment, but if it proves to be popular it will be extended to cover the whole of the ground.

Here are some points to note if you're contemplating a bet:

In the last 12 matches of last season Paul Cook (6/1) scored Wolves' first goal more times than Steve Bull (3/1). So did Robbie Dennison (9/1).

Last season Swindon won 2-1 (12/1).

This weekend last year Wolves beat Plymouth 3-1 (10/1).

## CLUBCALL • 0898.12.11.03

Calls are charged at 36p per minute off peak and  
48p per minute during peak time.



## FROM THE ARCHITECT'S DESK

The new floodlights to the John Ireland Stand have now been completed and it is hoped that they will be commissioned over the next few days. This will then enable demolition work to commence, including the floodlighting tower, to make way to the new North Bank Stand.

Tenders have now been received by the Club from the various contractors for the construction of the new stand and it is hoped that an announcement will be made within the next few days as to which company will be building the stand.

Work is also proceeding with regard to the detailed design for the new Waterloo Road and South Bank Stands. These constitute Phase 2 and it is anticipated that we shall be obtaining tenders for this work round about the end of the year. The plan is to commence construction of Phase 2 immediately at the end of the present season.

Over the next year or two it is also the intention to improve the facilities within the John Ireland Stand and you will have noted that a certain amount of improvement have already taken place, particularly with regard to the Family Enclosure. This work is being carried out in close conjunction with Manders Paints.



*Alan Cotterell*

### On duty

Our mascot for the match against Oxford United was 10 year old Lloyd Marriott. He is pictured here with the team captains and match officials before the kick off.



## TICKET INFO • 0898.12.18.23

*Calls are charged at 36p per minute off peak and  
48p per minute during peak time.*



Swindon Town arrive at Molineux this afternoon in third place in the table following a 1-0 victory over Bristol Rovers on Tuesday night. In fact they've only lost one game so far this term, coincidentally to Cambridge United.

They also found success in the Rumbelows League Cup against our Black Country rivals, Albion, when they impressed with their willingness to play open passing football. In that match Duncan Shearer showed his striking ability with an enormously powerful volley past Stuart Naylor.

Since the well documented problems at the Wiltshire club that saw them relegated to the second division - as punishment for an illegal payments scandal - after they'd won promotion via the play-offs, Swindon had a difficult season in 1990-91. However, new manager Glenn Hoddle has his side playing with confidence,

with himself installed as sweeper, and with form like that which they are currently showing they could well climb into the top flight again - and hopefully play there this time!

The club were originally formed in 1881, being first known as Swindon Spartans and changing to Swindon Town in 1883. After being champions of the Southern League they became founder members of Division Three in 1920 and only left it when they won promotion for the first time ever in 1963. They were relegated two years later

## HODDLE SWEEPS TOWN INTO TOP THREE



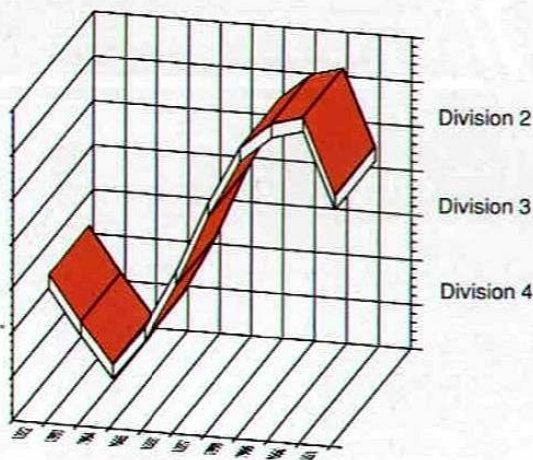
THE SWINDON TOWN LINE UP  
1991/92

but regained their second division status in 1968, staying up till 1974 before sliding down through to division four in 1982.

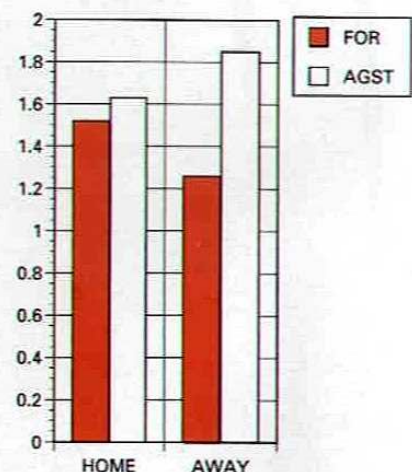
In 1986 they climbed back to division three and then went straight through to division two in 1987. Then followed their by now infamous yo-yo close season in the summer of 1990.

Featured left (Top to Bottom) Fraser Digby, Steve Calderwood, Mickey Hazard & Steve Foley

### THE UPS AND DOWNS OF SWINDON TOWN FOR THE LAST TEN SEASONS



### SWINDON TOWN GOAL POWER



■ *s w i n d o n*



# THE MANAGEMENT

Swindon Town manager Glen Hoddle is pleased with his side's start to the new season — and delighted to be playing on a regular basis himself after recovering from a serious injury that threatened to end his playing career while at French club Monaco.

Following an operation and a long battle to regain full match fitness, he has taken on the sweeper's role at Swindon and is once again enjoying playing and delighting spectators with his passing and shooting skills.

He said: "With the sort of injury I've had I can't look too far ahead, but I'm taking it game by game and so far I'm pleased with the way things have gone since I started playing again.

"The role of the sweeper is important to the system we play at Swindon, both defensively and offensively, and I'm glad to be able to get out there and influence things from inside the team rather than from the dugout.

"Obviously I would like to play for as long as possible, but we've got good enough players here to keep the team ticking whether or not I'm on the pitch.

"I've been very pleased with the way we've played so far this season. The players know the way I want them to play and they've produced some excellent football — the sort of football I've always believed in.

"Our best result was probably the 4-1 win at Ipswich when Ipswich were top of the table and really flying, but since then we've had a couple of performances that were even better than the one we produced that night.

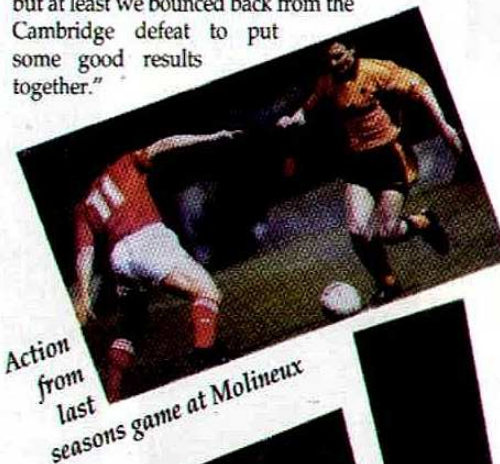
"We've been consistent and that's one of the most pleasing things. We've perhaps conceded more goals than I

would have liked, but at least we've not thrown goals away — teams have had to earn their goals against us.

"Our only defeat was at Cambridge and that was a difficult game for us, although I think that anyone who comes up against Cambridge will find it difficult against the system they play.

"We had a couple of players out for that game, which didn't help, but that's certainly not an excuse — we didn't perform as well as I'd have liked and it cost us.

"I'm sure there will be more games during the season where we don't play as well as we should, but at least we bounced back from the Cambridge defeat to put some good results together."



## STAR VISITOR GLENN HODDLE FACTS

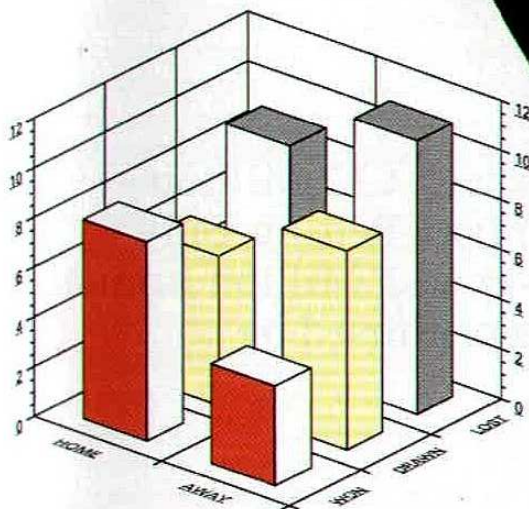
**BORN:** Hayes, Middx.

**DATE:** 27.10.57

**CAREER DETAILS:** Made 370 apps for Spurs and scored 88 goals

**PREVIOUS CLUBS:** Tottenham Hotspur, Monaco

### SWINDON TOWN FINAL RECORD FOR 1990-1991



P	W	D	L	F	A	W	D	L	F	A	PTS
46	8	6	9	31	30	4	8	11	34	43	50

FINAL LEAGUE POSITION  
21ST

t o w n



# Connections

● Bobby Woodruff, who arguably could throw a ball in further than anyone, joined Wolves from Swindon. His son Bobby junior also made a couple of appearances for Town.

● Gerry Taylor, who turned out for us more than 150 times, spent a season with Swindon before leaving soccer to become a policeman.

● Wolves first met Swindon in the triumphant cup run of 1908. It was to be 67 years later before the teams met again in the League Cup. Our first League meeting with Town didn't take place until two seasons ago.

● Goalkeeper Jim Barron (left), who started his career with us, made 79 appearances for Swindon.



● Peter Eastoe, who enjoyed two spells at Molineux, scored 43 league goals for Town.

● In that first meeting between the clubs in February 1908 an injury-hit ten man Wolves side defeated the then Southern League Swindon with two goals in the last two minutes. In order to play that day the Rev. Kenneth Hunt sacrificed an amateur cup after being picked to face Wales.

● Ted Batchelor, a Wolves junior, joined Swindon in 1950 and made 89 league appearances for them.

● The popular Ernie Hunt (right) joined us from Swindon. He will always be remembered for his donkey kick goal against Everton whilst playing for Coventry.

● Frank Wildman played in goal for both clubs prior to the last war.

● When Wolves met Town in the League Cup Semi-final at Molineux in 1980, the attendance was 41,031. That figure has never been bettered since and now of course never will be.



The Football Trust has been created to help football at all levels and especially to meet the requirements of Lord Justice Taylor's Final Report.



Annual income is expected to exceed £32 Million – £20 Million as a result of the reduction in Pool Betting Duty and the continuing contribution of over £12 Million annually from the Spotting-the-Ball competition organised by Littlewoods, Vernons & Zettors.



**THE FOOTBALL TRUST**  
*Helping the game*



# Home Territory

There is a good chance that, as the Black Country is further hit by recession, a number of fans present today will have applied for jobs in the Swindon area. For, being on the Western edge of the booming Thames Valley, the Wiltshire town has been one of Britain's most prosperous towns in recent times. Yet whilst in 1991 we think of Swindon in terms of the silicon valley and computer-based companies, until twenty years ago it was very much a railway town.

The Crewe of the South may not sound a very complimentary thing to say of today's visitors, but the description sums up the importance of Swindon's place in our railway history. Fortunately for the locals, when social change (and Dr. Beeching) brought a decline in the industry, advanced technology brought new opportunities to the area. Good fortune that has so far eluded such industrial heartlands as the Northwest with textiles or the Northeast with shipbuilding.

Wolves fans planning on visiting the County Ground later in the season may be interested in a trip to the Great Western Railway Museum in Faringdon Road to see its fascinating collection of locomotives and other exhibits relating to the GWR. Adjacent to the museum is the Railway Village House, a restored foreman's house furnished as a typical working-class home at the turn of the century. You may wish to visit those interesting displays incognito, lest anyone spots you and identifies you as a train-spotter!

Whilst in Swindon itself, another place worthy of a visit is the Museum and Art Gallery on Bath Road, whilst there are plenty of attractive towns nearby in the beautiful Wiltshire countryside. Marlborough is one of these (10 minutes South-east) and here you can see the 150 year old Wilton Windmill, now fully restored. 10 miles South-west is Avebury (follow the A361), one of the most important pre-historic sites in Europe and actually built before Stonehenge, although probably some time after the toilet facilities at The Hawthorns.

Football-wise, the Swindon area cannot realistically be described as a hotbed, with Hellenic League clubs being the most senior local outfits. Swindon Athletic (Pinehurst Road) is the nearest one to visit, but a route down through the Cotswolds would not only provide a scenic start to the day but also opportunity to call in at the likes of Bromsgrove Rovers, Pershore Town, Evesham United and Cheltenham Town. However, no true traditionalist could contemplate visiting Swindon by any other means than by train!



# THE TIMES

SEPTEMBER 21st 1901

Ninety years ago today Wolves won an unexpected derby victory over Small Heath 2-1. It was reported that there was great interest in the match and that many of the large crowd had travelled from Wolverhampton sporting old gold favours.

Small Heath (who didn't change their name to Birmingham until 1905) had been promoted from the Second Division the previous season and had started the season very well, heading the First Division table. The match took place at Coventry Road (also known as Muntz Street) a quite substantial ground of which no trace now remains. Birmingham didn't move to St. Andrews until 1906.

Both clubs announced unchanged teams and Wanderers "won the toss and went off with a rush" according to The Birmingham Post. The visitors were much smarter on the ball and were rewarded in the fifteenth minute when Archer, "frequently at fault", missed the ball, J.W. Jones centring for Beats to score.

Small Heath pressed for an equaliser but clever play between the Wolves forwards set up Hayward for a second goal.

Pheasant was injured in a violent collision and had to leave the field, but returned later (this was long before the days of substitutes, of course).

Aston (why wasn't he playing for Villa?) pulled a goal back after a clever pass from McMillan just before half-time. In the second half Small Heath dominated, but Baddeley, helped by gallant a Wolves defence, was equal to everything thrown at him. McRoberts hit a post and Wooldridge had a goal disallowed but Wolves hung on to complete a memorable win.

Wolves became joint leaders with Everton, both clubs having six points from four games; Small Heath dropped to third.

Small Heath: Robinson, Geldre, Archer, Walton, Wigmore, Leake, Athersmith, Aston, McMillan, McRoberts, Wharton.

Wolves: Baddeley, J.Jones, Walker, Whitehorse, Pheasant, Annis, J.W. Jones, Hayward, Beats, Wooldridge, Miller.

Wolves also won the reserve fixture between the two clubs 3-1 at Molineux before an attendance of 2,500 in the Birmingham League. Other clubs in that league included Crewe Alexandra, Kidderminster Harriers and the Welsh club Druids. Whilst Shrewsbury Town won 2-0 against Berwick Rangers (!) (probably too tired after all that travelling).

Villa went down 1-0 at Stoke in the First Division, while in the Second West Brom beat Burslem Port Vale 3-1 at The Hawthorns. Walsall drew 0-0 at Newark in the Midland League.

In the news, Tsar Nicholas visited France to strengthen the alliance between France and Russia. Minor skirmishes continued in the Boer War. 20,000 Grimsby fishermen went out on strike, and London was hit by a smallpox epidemic. At Wolverhampton Borough Police Court a man was charged with stealing 13 sheep, although for what purpose wasn't reported.

BACK  
PAGE



Tom Baddeley equal to the Small Heath attack

FRONT  
PAGE



# PENALTY!

**J**anuary 1992 will bring strict new tyre laws designed to improve safety on our roads.

The new legislation demands a minimum of 1.6mm of tread on each of your car's tyres.

The PENALTY for failing to comply can be devastating – up to £1000 fine for EACH ILLEGAL TYRE plus 3 Penalty Points on your licence.

For safety's sake check your tyres now and when replacing specify Goodyear – more grip, more control, more safety!



**GOODYEAR**

**STAY LEGAL-STAY ALIVE**



FROM  
• THE •

# Boss

GRAHAM TURNER

**I**n a week during which our clubs have shown they are still a force to be reckoned with in Europe I find it incredible that the hierarchy of the Football Association should be threatening to close the season down if they don't get their way in negotiations with the Football League. It just goes to prove why they should never have tampered with the structure of The League in the first place.

The performances of our teams against European opposition has shown that, if anything, our game is stronger now than it was six years ago when we were banned from European competitions. The tremendous atmosphere at Highbury on Wednesday proved how important our involvement in Europe is to fans and players.

Supporters like to see new opponents and different styles of play, and for players these matches are occasions to relish.

This week has seen another milestone in the club's history, with the granting to Wolves, by the Council, of a 125 year lease on Molineux. Some work has already begun and shortly we will see the start of major refurbishments, not before time I'm sure you all agree. However, the delays have not been for the want of trying by everyone involved with the club.

At Newcastle last week we produced an excellent result, even if our performance was not that impressive.

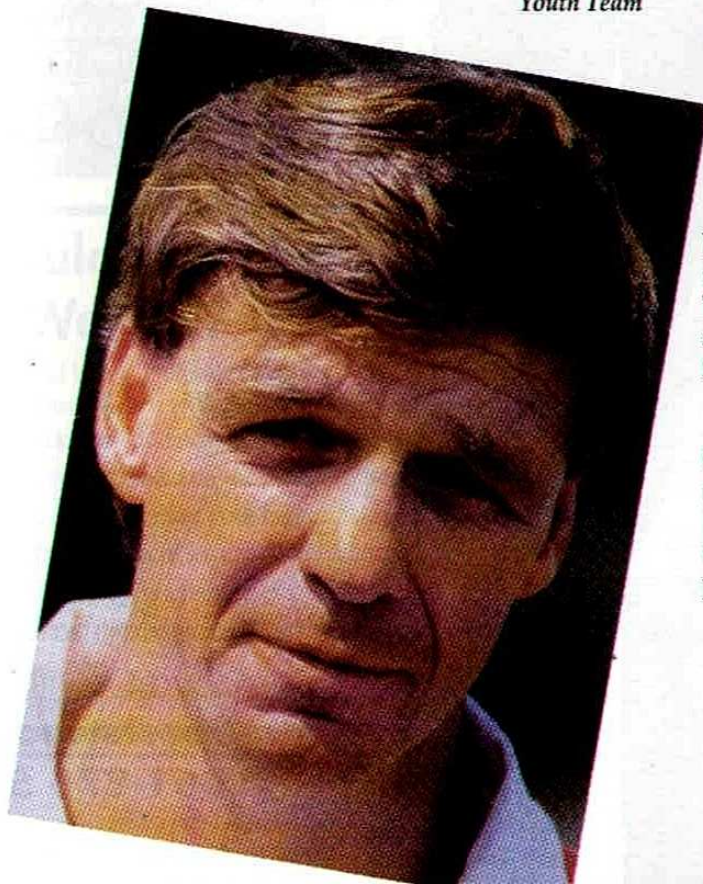
Newcastle may have been disappointed with the outcome, but the difference was that whilst both teams had chances, we had the players to take them.

We knew what to expect at Cambridge in mid-week. They play a very direct style - in fact someone said to me after the game that they make Wimbledon look like Real Madrid - but the outcome of two away games has been three points from one victory and one defeat. Last season we might have produced two better performances, earned two draws, and hence less points.

In away games we tend to be put under pressure more at the back as teams are willing to commit themselves upfield and leave only two defenders marking Bull and Mutch. That means that we have to make the most of the opportunities we will undoubtedly get up front.

**'... It just goes to prove why they should never have tampered with the structure of The League ...'**

*Congratulations to the Youth Team*



I'd like to take the opportunity to congratulate the Youth Team

for their fine performance on Monday night. A 7-0 victory by Chris Evans' lads, with Scott Voice getting a hat-trick inside fifteen minutes, was a tremendous result. The Reserves have also had a reasonable start to the season, though at the time of writing I don't know the result of Thursday night's game at Huddersfield.

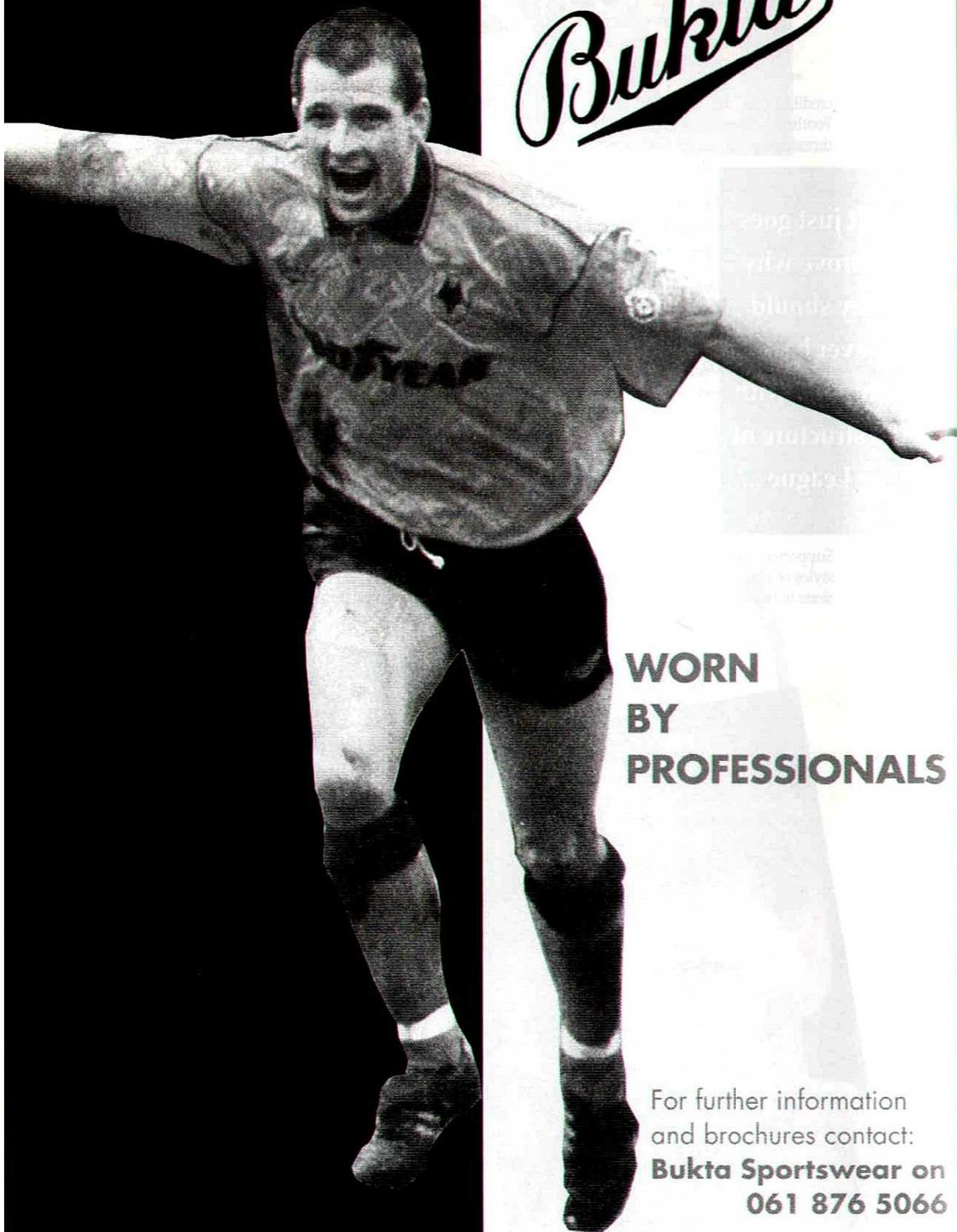
I would also like to officially welcome our new Community Development Officer, Tony Evans. I'm sure all sections of the community will benefit from his appointment; he will be arranging all kinds of activities at Molineux and we wish him well in his new post.

*Graham Turner*



# SPORTSWEAR

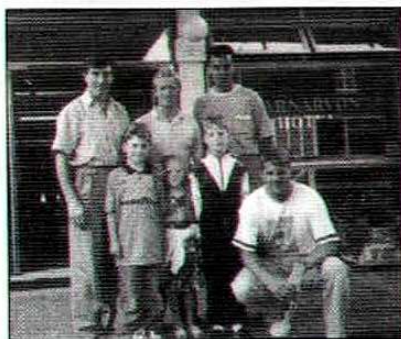
# *Bukta*



**WORN  
BY  
PROFESSIONALS**

For further information  
and brochures contact:  
**Bukta Sportswear on  
061 876 5066**





## SILVER ANNIVERSARY

This picture of Ray Stock and his son Oliver (the one in the Wolves shirt) was taken on July 14th, the morning after the London Wolves 25th anniversary dinner & dance. The players and their wives, and Kenny Hibbitt and his wife were their guests.

# WOLVES NEWS

NEWS FROM IN AND AROUND MOLINEUX

### Supporter of the Year



At half-time in the game against Port Vale, President Sir Jack Millichip presented the Wolves Supporter of the Year trophy to a group of fans who followed the team on their pre-season tour of Sweden. One of the fans, Mick Crook, is pictured receiving the trophy from Sir Jack.

### Late Ticket Info

Southend United Away 28th September 1991  
Terrace £6.50 - pay on the day  
Seats £9.00 - available to members and season ticket holders only

## Executive Boxes

We have eight-seater Executive Boxes for hire on a single match basis. The ultimate way to watch any match is from the comfort and style of one of our executive boxes. Full catering service available. Why not invite your clients, customers or your own staff to a relaxing and enjoyable afternoon at Molineux?

For further information on all the above ring Gary Leaver on (0902) 23166

Today we would like to welcome Vic Walker and his guests who won today's VIP Day Out at Molineux in our Christmas Draw. Well Done, Vic, and have a great day.

VIP Vic



1. Matchball Sponsors for our recent home game versus Oxford United were Woodlands Home Improvement Centre, standing proudly behind their advertising board prior to the game.



2. Aircol Collections were Trainers Bench Sponsors for the day, just making sure the seating arrangements are in order before the playing staff come out.

3. Bams Plant representing Dri-Lined Interiors receiving a signed football from Keith Downing as part of their Ballboy Sponsorship package.

## Would you like a VIP day out at Wolves?

You could be a VIP Guest of Wolves by sponsoring the Match, Matchball, Trainers Bench or Ballboys, and enjoy the following benefits.

- Acknowledgement in the Matchday Magazine.
- Announcement on the public address system.
- A chance to meet your favourite players.
- Presentation of a signed football from a Wolves player.
- Photographs as a memento of the day.

All at prices you can afford.

Give us a ring.

For further information on the above ring Gary Leaver on (0902) 23166

## BOO BOYS

Having got home after watching Wolves beat Oxford 3-1 I feel I must write to express my disgust and disbelief at the "boo-boys" in the crowd, i.e. the so-called Wolves supporters who spend the match pulling players to pieces, and then even after a good 3-1 win, boo the team at the final whistle. Perhaps they ought to go and support West Brom.

Geoff Hurst, Market Drayton, Shropshire.

CLUB • CALL 0898 • 12 • 11 • 03

Calls are charged at 36p per minute off peak and 48p per minute during peak time.





**Manders  
Manders  
Manders  
Manders**



# FAMILY ENCLOSURE

Well, hello again and welcome to the Manders Family Page.

With good timing, we certainly helped out on a hot and sunny afternoon at the Wolves v Oxford game with our sought-after hats. What more could we ask for - the Molineux stadium bathed in glorious sunshine and a Wolves victory - brilliant!

Fingers crossed for the same result today.

## MANDERS MUDDLER

Here is a quick conundrum for you to ponder over at half-time - the answers when listed together will produce a word vertically, for which Manders Paint products are used (should take you approximately 10 minutes).

1. Barclays League ——— Two.
2. Sometimes known as the morning and evening star, but better known as a Wolves star.
3. The Mander ——— shopping complex.
4. Wolves beat them 3-1 on 7th September 1991.
5. "The Boss's" christian name.
6. Wolves' main sponsor.
7. What have Manders been making since 1773? (Begins with 'p')
8. A type of paint.

## THE MANDERS FAMILY OF COMPANIES

### PROPERTY DIVISION

The Mander Centre, Wolverhampton's award-winning shopping complex with its unique sliding roof.

Mander House, Wolverhampton's foremost prestige office complex.

### COATINGS AND INKS

Manders Liquid Inks, the UK leaders in flexible inks for food packaging.

Manders Oil Inks, the UK leaders in newspaper printing ink technology.

Manders Industrial Finishes, leaders in container coatings and finishes for white goods.

Manders Graphics, leaders in decals and transfer markings.

### DECORATIVE

Manders Paints, the name that to the professional painter symbolises quality.

Mander/Deval, the UK's fastest growing wallcoverings distributor.

Trend, by Manders, the quality paint range for the independent retailer.

MGB Tiles, a major distributor of ceramic tiles, with a large depot in Bilston.

## FACE IN THE CROWD

Talking of hats, have a look at the photo below. Are you featured in the circle? If so, pop along to the Wolves Commercial Dept. and claim your autographed T-shirt and decorating voucher as your prize in our "Face in the Crowd" contest.





Policing football matches has become a complex operation requiring meticulous planning and on-the-day vigilance. Over the years specialists have developed in the field and have become closely attached to soccer clubs and their supporters.

At Wolves we have two Wednesfield based police officers who are responsible for the organisation of matchday policing, Football Liaison Officer Sergeant Roy Sutton and Football Intelligence Officer PC Geoff Bagnall.

Roy and Geoff have separate but complementary roles on matchdays, Roy organising and monitoring the uniformed police presence and plain-clothes man Geoff getting involved more directly with the fans.

By the time matchday comes around Roy, through liaison with Wolves officials and senior police officers, will have determined the security priority to place on the match and ordered the necessary numbers of police - including officers from the mounted department, the dogs section, traffic motorcyclists, special constables and traffic wardens.

He will also have liaised with the police force in the opposition team's home town or city, covering items such as where and when supporters coaches should arrive to be met by local police.

Matchday itself, as Roy explains, is extremely busy, starting with a series of briefings to set the police operations in motion. Roy says: "At every game we have a Match Commander, usually either Chief Superintendent Jones or his deputy John Jasper from Dunstall Road station, and they have to have a briefing aid giving details like match times, opponents and anticipated numbers of spectators.

"We also have an Outside Ground Commander and an Inside Ground Commander, the Inside Commander giving his own briefing to his men about 90 minutes before the game and also his duties in the event of a major emergency.

"Another briefing sheet I prepare is for the match day stewards, showing basic match details and also the police parade time and any necessary information on away supporters.

"Before every game I also have to make a series of checks to

# Day of the Match

ensure that our emergency procedures are in order. Equipment such as bolt cutters, fire extinguishers and loud-hailers are housed in the South Bank area and at the North Bank end we have an emergency access 'corridor' which we have to make sure is kept clear at all times.

"During the match itself I am based in the police control centre in the ground, working basically as a radio controller and keeping in touch with every aspect of the operation."

Alongside Roy in the control centre are the Match Commander, an officer to man the telephone lines and CCTV camera operator PC Geoff Bagnall. Camera duties are just one part of Geoff's match day routine, which often starts with a chat with fans he knows through his travels to Wolves away games - Geoff attends all away matches as well as home fixtures.

Both home and away he liaises with 'spotters' from the local police force of whichever team Wolves are playing. He explains: "Spotters are police officers who have detailed knowledge of their local team's football fans and in particular know any potential trouble-makers who may be at games.

"I liaise with spotters involved with all clubs who visit Molineux, and during match days I work closely with them in case of any problems that might occur. A lot of clubs have a few fans who have caused trouble in the past and are barred from attending games through exclusion orders.

"Spotters know who these people are and one thing they do on matchdays is keep a lookout for anyone who is subject to an exclusion order but has managed to get into the ground.

"Through operating the CCTV cameras during the game I can keep in contact with spotters from the away team and generally monitor the crowd as a whole. If we do spot any problems we can quickly have them attended to using our radio links.

"The CCTV system monitors the whole of the inside of the ground and all the outside area where there is the potential for problems to arise - including car and coach parks - so the system is a very useful tool in our matchday work."

Once the game is over and the crowd has dispersed debriefings have to be undertaken, information gathered on any arrests and ejections which may have been made, and reports prepared for the National Football Unit as well as for police purposes.

Roy says: "Football match duties are only part of the job for Geoff and myself but they do take up a lot of time in preparation as well as on the day itself.

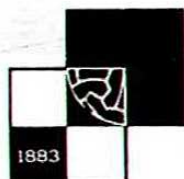
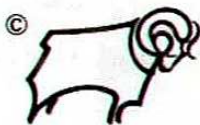
"Policing matches is a streamlined operation these days, and I'm happy to say the hooligan element among fans is not nearly as prevalent as it was a few years ago - and Wolves fans, generally speaking, are first class."

**Sergeant  
Roy Sutton  
& PC  
Geoff Bagnall**



*Police in the Molineux Family Enclosure*





**IF YOU'RE AGED 11-16, THERE'S  
ONE CLUB YOU  
SHOULD KNOW MORE ABOUT.**



For the best save this season,  
open a BarclayPlus account.

You'll automatically become  
a member of BOP MC

(BarclayPlus Our Price Music Club) and get  
great discounts on music and videos at any  
Our Price Music store.

You'll also receive regular BOP MC  
bulletins, packed with music features and  
details of mega prizes to be won.

And you'll enjoy a good rate of interest on  
your savings in your BarclayPlus account.

Call in to any Barclays  
branch to pick up a  
BarclayPlus leaflet. It  
could be a right result.





## Hatherton Wolves Supporters Club

**Travel Information:** Executive coaches will run to all away games, and will have toilet and video facilities.

All coaches are fully stewarded and come complete with refreshments. Membership cards must be carried at all times, as card checks will be in operation. Your safety and comfort is our aim. Coaches will start from Falkland Street, Wolverhampton and Dudley Technical College, Dudley. Bookings will be taken at Hatherton Arms on Matchdays and also by phone up to the Thursday prior to a Saturday match.

Wolverhampton bookings: (0831) 528656 (5.00pm to 10.00pm)

Dudley Bookings: (0860) 650659 (5.00pm to 10.00pm)

Southend United - Sat 28th September - Depart: 9.00am Wolverhampton; 8.45 am Dudley - Cost £8.50

**Welcome:** A special welcome to your new committee member, Darren Rush, who will be doing his best for Hatherton Wolves and Wolverhampton Wanderers FC.

**Membership:** The membership fee to join the Hatherton Wolves is still only £2.00. For further information please contact Keith Blunt.

**Leisure Wear:** Hatherton Wolves Leisure Wear is now on sale at Hatherton Arms (outdoor). Come in and browse around.

**Tipster Competition**

All Hatherton Wolves members have a chance of winning £100.00 for a £1 stake. Most members have received their tipster forms, so complete form and hand back to any Committee member. Closing date is 30th September.

**Coming Soon:** Soon to be announced is the Hatherton Wolves weekend away. The trip will coincide with an away fixture. Coaches will be departing from Wolverhampton and the cost will include bed & breakfast.

**Charity match:** Coming soon, the annual charity football match against the Linthouse Wolves Supporters Club. After winning the previous two games, Linthouse are set for revenge. All details for this worthy cause will be available shortly.

Hatherton Wolves Supporters Club have become well known for raising money for charities, especially local children's hospitals and also local Wolverhampton people, so please give generously when any committee member asks for your support.

Hatherton Wolves Christmas Disco: Arrangements have already started for this year's Christmas Disco. This annual event will be even bigger than last year, so keep your eye on this space for the spectacular announcement.

## Linthouse Wolves Supporters Club

"Your Friendly Supporters Club"

**Membership:** Membership for this season 91/92 is just £2.00. For further information contact Lloyd Walton on (0902) 738144

**Away Travel:** Linthouse Wolves run executive coaches to all away games. All coaches are fully stewarded and come complete with television, video and toilet facilities.

Departure times for forthcoming fixtures are as follows:

Sat 28 Sept v Southend. Cost - £8.00. Depart 8.15am

For all coach bookings tel: Lloyd Walton on 738144

Main pick-up point: Linthouse public house in Wednesfield

Calling all Wolves fans living in Wednesfield: why not hop on just one bus to all your away games. Sensible pick-up points may be available on request, so come on and join Linthouse Wolves and join a really friendly bunch with only

Wolverhampton Wanderers Football Club at heart. Give us a whirl - you won't regret it. Look forward to hearing from you.

## Charity Football Match

Linthouse Wolves will again be challenging Hatherton Wolves to a football match to raise cash for a local charity on November 14 at Wednesfield Social Football Club. More details will be announced in the Barrisley Programme on October 5th. And for all Hatherton Committee members, feasting their eyes on this, we have one thing to say: "No ringers please."

## Penn Mitre Wolves

Away travel from Penn, Bradmore and Wolves v Southend September 28th. Depart Mitre 8.30 am. Fare (members) £8.50; (non-members) £9.50. Membership now available for £3.00 per season. Forms available from the Mitre, Church Road, Bradmore. Telephone (0902) 714526 or 331657.

Departure times subject to alteration. Please ask about our pick-up points - they may be just up your street.

## Cannock Wolves

Formed in 1977 - will again be running coaches to all Wolves' away games this season. Southend United, depart Cannock 9.00am, fare £7.50 (Juniors £5.00). Shrewsbury, 5.30pm, £3.00 (£2.00). Middlesbrough, 10.00am, £7.50 (£5.00). It is the times for Cannock bus station that are shown but we also pick up at Rugeley bus station; the Plough and Harrow, Hednesford; Coniston Hall, Chadsmoor; and the Royal Oak, Great Wyrley.

Membership is still only £1.00 and new members are very welcome. General enquiries can be made to Steve Bishop on (0543) 577338; coach bookings through Graham Heathcote (0889) 579805. Please make your calls in the evening between 6.00pm and 9.00pm.

## Wolverhampton Wanderers F.C. Official Supporters Club

**Away Travel:** Southend Utd v Wolves, Sat Sept 28th K.O. 3pm

Coaches leave North Bank Car Park 8.00am. Coaches leave Dudley (Stafford Street Car Park) 8.00am. Std Coaches - Adults £8.50 U/18 & S.C. £8.00. Executive Coaches - Adults £9.00 U/18 & S.C. £8.50

## Zenith Cup

Grimshy v Wolves Tues Oct 1st K.O. 7.30pm. Coaches leave North Bank Car Park 3.00pm. Std Coaches - Adults £8.00 U/18 & S.C. £7.50. Executive Coaches - Adults £8.50 U/18 & S.C. £8.00

## League Cup

Shrewsbury v Wolves Tues Oct 8th K.O. 7.30pm. Coaches leave North Bank Car Park 5.00 - 5.30pm. Coaches leave Dudley (Stafford Street Car Park) 4.00 - 4.30pm

Std Coaches - Adults £3.50 U/18 & S.C. £3.00

W'ton Coaches Tony Pugh - W'ton 458539

Steve Pugh - W'ton 734077

Dudley Coaches - Ron Westwood - Sed. 661039

Other Nos - Glyn Jones - 021 522 2986

Paul Gardiner (Tango) - 0860 684540

Bill Stephens - 896808

Dudley Pick Up Points: Stafford Street Car Park, Green Dragon Gornal, Sedgley. Please state Executive or Std Coaches when booking. Membership cards must be carried at all times. Card checks will be in progress.

Anyone living in Stafford, Penkridge and Coven areas can get on the coach en route to Wolverhampton, as long as they have booked on the coach in the correct way. Give Andy a ring on Stafford (0785) 44575. He will tell you the time the coaches leave the garage.

**England Games:** England v Turkey Wed Oct 16th. Coaches leave North Bank Car Park 3.30pm. Executive Coaches Adult £8.50 Jun/S.C. £8.00

Please ring usual numbers for booking all coaches.

Poland v England Wed. November 13th K.O. 8pm. Depart London (Gatwick) Tues. 12th November 12.00pm. Arrive Poland Tues. 12th November mid-afternoon. Price of £310 per person includes: Flight to Poland & return; 2 nights B/Breakfast; Transfers to airport, hotel & football stadium. Does not include match ticket or Polish Visa. Give Muriel a ring on W-ton (0902) 330322.

## Football News: 9th September

With goals from Chris Howells (2) and Andy Bishop (1), the top of the league clash came out in favour of Woodcross. But what a thriller, with Wolves taking the lead and then Woodcross. The teams were so finely balanced the game could have gone either way but with all credit Woodcross pulled off the result. Final score Woodcross 5, Wolves 3. Lets hope the return game is as good.

## 15th September

Wolves Supporters OWN prolific partnership of Chris Howells and Paul Wilkinson were on the scoresheet again. With a goal from Paul Rolinson a side foot into the bottom right hand corner and a curling left foot shot from Chris Howells gave Wolves the lead. Just 5 mins into the second half one of our players got a red card and with Steve Page having an injury to his knee, Mick Senior replacing Steve and Wolves down to ten men the game opened up. Newcross pulled the score level. With Andy Harris (back after injury) and Mick Senior both running at Newcross defence, Wolves took the lead by an own goal claimed by Andy Harris. Our defence stood firm with Rich Davis and new signing Mark Houllton, and with backing from Mark Williams and Richard Raybould and fine saves from Andy Vivash we held on to the lead. Final score Wolves 3, Newcross 2.

## Player of the Year Disco

Arrangements are already being made for this popular annual event. Who will be the Supporters Club Supporter of the Year? Will it be you? Keep an eye on this space for details.

## Membership

The cost of joining the Family Supporters Club is: full members £5.00, Junior U/18 and Senior Citizens £2.50. Photographs are taken in the hut with the security camera at every home game, so for just two minutes of your time you can become a member of the Official Supporters Club. Ring Albert on W'ton (0902) 330322 for details.

## Programmes

Come in the hut and browse around, buy your home, away and old programmes, chat to Steve and John for your orders and any shortages you have. Give Steve a ring on (0902) 734077. Also, lots of new collections coming in all the time.

## Videos

Nearly 300 videos to choose from. If you have missed a game give Glynn or Alison a ring on 021 522 2986 to order what you want. Postal Service for Supporters Club Members.

## Lottery

The Supporters Club are agents for the Wolves Lottery. If anyone would like to help us sell them, please contact one of the Committee Members in the hut. Lottery and Golden Goal tickets available in the hut, on matchdays, also new squad photos (#991-1992 Season) £1.25 each.

## Wolves Greats Picture (Raffle)

The Wolves Supporters Club have still 1 picture left to raffle off to our members - the picture is one all true Wolves fans would love to win. The tickets are £1 a strip and are available in the hut on matchdays. We do not want to make any money, just give the fans a chance to have something to treasure. Come in the hut and buy your tickets. The winner will be notified.

## Weekend Away

This season we will again be organising

weekends away. Please come in the hut and chat to the Committee if you are interested in going away for a weekend.

## Air Wolf 92

Fly to Sunderland on Leap Year Day Sat February 29th

First 230 are sure of a seat on a Boeing 767.

Please ask in the hut for details or ring Muriel (0902) 330322.

## New 12 Weekly Pool

Want to win £1,000. Draw to be made in December. Please give your name and address to any committee members if you are interested. Help the supporters club to raise money for the Football Club.

## Wolves Golden Greats

Special Offer Volume 1, 2 & 3 for £7.50. Get Christmas presents early, fibre tipped pens 25p.

## Telford Wolves (affiliated to Official Supporters Club)

Coaches run to all away games, next away games Southend Sat Sept 28th and Shrewsbury Tues Oct 8th. Picking up points: Newport, Donnington, Wellington, Madeley and Shifnal. Please ring Doreen Mascrop on Telford 604485 or Dave Smith on Telford 252761 to reserve your seat.

## Ludlow Wolves (affiliated to Official Supporters Club)

Coaches will be running to Wolves away games at Southend Utd Sat Sept 28th & Shrewsbury Tues Oct 8th. Picking up points Worcester & Kidderminster. Please ring Dave Brown on Ludlow (0584) 890403 for all departure details.

## Manchester North West (affiliated to Official Supporters Club)

Keith Christie would be pleased to hear from anyone in the area who would like to join Manchester North West branch. Travel arrangements to all Wolves home and away games are organised. Give Keith a ring on 061 761 3439 for details.

## London Wolves (affiliated to Official Supporters Club)

London Wolves leave Euston by train at 10.30am (Saturday) and 15.40 (midweek) arriving back 8pm and 00.13 respectively. The return fare is £13 for members. Away trips are also organised except in the south. Membership is £7 for the season. Enquiries to Dave Slape, 26, Brockenhurst Way, London SW4U.

## Daventry Wolves (affiliated to Official Supporters Club)

Chris Cox would like to hear from anyone in the Daventry area who would like to join this branch. Travel can be arranged to any home and away games. Interested, give Chris a ring on Rugby 890166.

## Plymouth Branch (affiliated to Official Supporters Club)

We are looking for Wolves supporters living in the Devon and Cornwall areas with a view to travelling to Wolves home and away games. If enough interest is shown we can hire coaches or mini-buses. Interested? Ring Dave Benton (0752) 664026 or A Harrington (0752) 225766.

## Evesham Wolves (affiliated to Official Supporters Club)

Evesham Wolves are trying to organise coaches to all Wolves home and away games. Anyone living in the area who would wish to use this facility please ring Elaine (0386) 40722 for details. Picking up at Redditch & Bromsgrove.

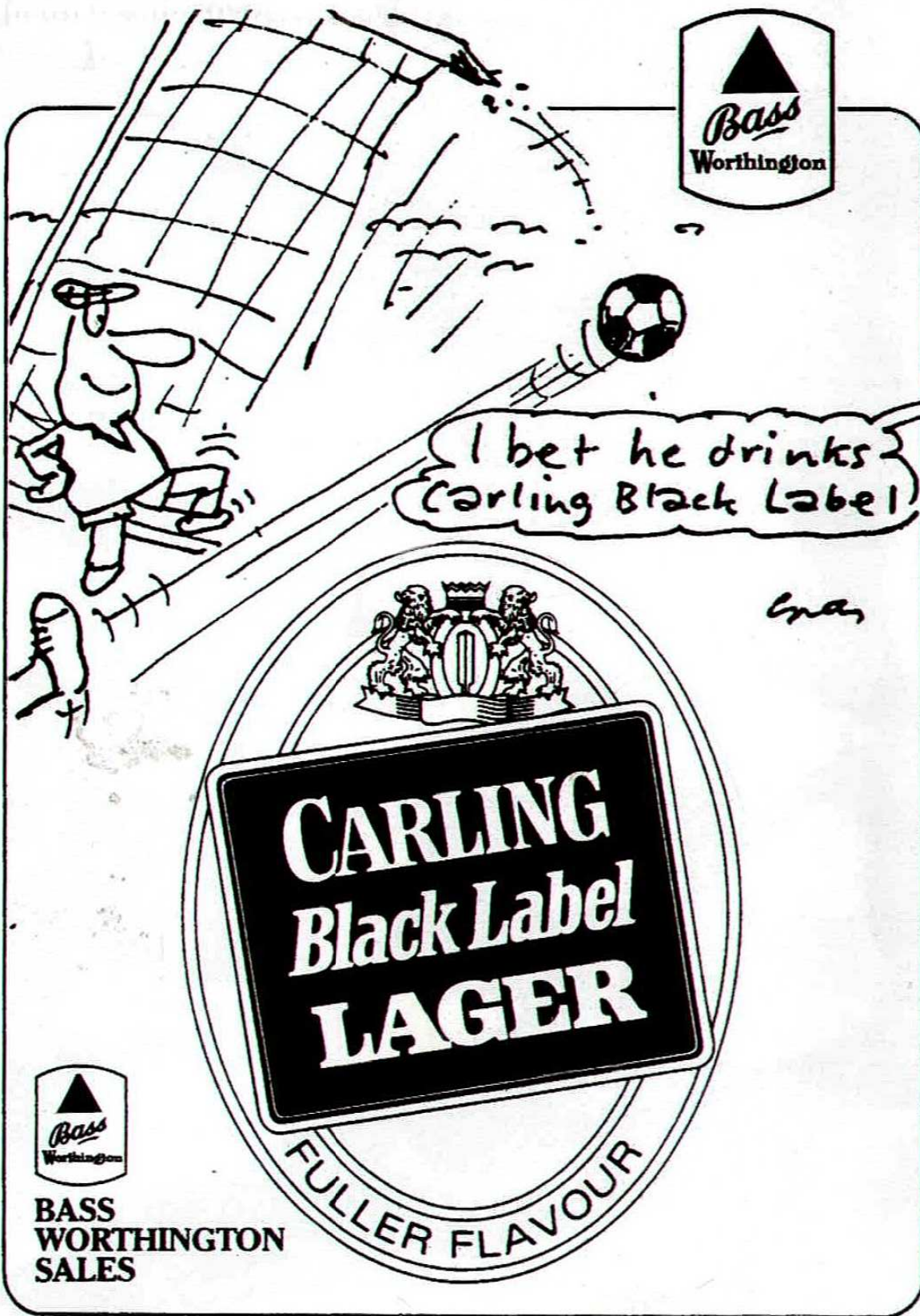
## Malvern Wolves (affiliated to Official Supporters Club)

Neil Hewitt is looking for Wolves supporters in the Malvern area with a view to keeping Malvern Wolves Supporters Club going, and to arrange travel to all home and away games. If interested give Neil a ring on (0684) 40375.









I bet he drinks  
Carling Black Label!

Carling



BASS  
WORTHINGTON  
SALES

FULLER FLAVOUR



# NEWCASTLE

14 SEPT 91



BEFORE  
NEWCASTLE  
COMPLAIN OF  
BAD LUCK  
THEY SHOULD EXAMINE  
A BUILD-UP THAT'S SLOWER  
THAN WIMPEYS' AND THE  
SAME PASSION FOR OFFSIDE  
POSITIONS THAT SEALS  
HAVE FOR THE BEACH



AT TIMES IN THE  
FIRST HALF  
IT WAS  
LIKE A  
SINGLE-DECKER  
IN THE RUSH  
HOUR. IN THE  
WOLVES' BOX,  
BUT THE LATEST  
CENTRE-BACK  
PARTNERSHIP  
CONDUCTED  
AFFAIRS  
WELL.  
TOM  
BENNETT'S  
SWITCH  
COULD BE  
JUST THE  
TICKET.



...AND SPEAKING OF INFLATION...  
PAVEL SRNICEK LOOKED  
SOUND AS A POUND  
KEEPING GOAL FOR BANIK  
OSTRAVA LAST SEASON,  
BUT BEHIND UNITED'S  
INEXPERIENCED DEFENDERS  
HE WAS MORE OF A  
BOUNCING CZECH.

THE VISITING  
AUSSIE TOURING  
SIDE WERE STILL  
COMING TO TERMS  
WITH BROWN ALE  
WHEN TIM STEELE  
FAIRLY BLAYDON  
RACED THROUGH  
NEWCASTLE'S  
DEFENCE AND  
DELIVERED A  
CROSS THAT  
CAPTAIN  
SCOTT  
TURNED  
INTO  
HIS  
OWN  
NET.



TRIGGERED INTO A MORE  
INCISIVE FRAME OF MIND,  
UNITED FOUND INSPIRATION  
DOWN THEIR RIGHT WING.  
- O'BRIEN WAS  
UNLUCKY WITH A  
LOB THAT CAME  
BACK OFF THE  
BAR, & PEACOCK'S  
ELUSIVE CROSS  
WENT FAR FROM  
THE MADDEN  
CROWD.



ANDY  
MUTCH  
AND  
BULLY  
PUT  
ON A  
SHOW  
OF



SHARP-SHOOTING  
AND MOBILITY.  
-BULLY SCORED  
THE SECOND  
FROM A NEAR  
-POST CORNER,  
BUT WHY DID HE  
AND TIM STEELE SPOIL  
THEIR PERFORMANCES WITH  
BOOKINGS FOR CRUDE TACKLES?

## MAGPIES 1 WOLVES 2

AT THE RISK OF BEING CONTENTIOUS: IN A CITY THAT HAS  
BEEN STRICKEN WITH CIVIL DISORDER DURING THE WEEK, THERE  
WERE NO DISTURBANCES AT THE MATCH, WHERE THE RESULT WENT  
AGAINST THE HOME TEAM. I'M NOT SAYING WE SHOULD APPLAUD  
FANS FOR NOT RIOTING, BUT I AM SAYING "THINK AGAIN" TO THE  
PUNDITS WHO THINK THE WORD "FAN" IS SYNONYMOUS WITH "HOOLIGAN".



A year almost to the day after making his full Wolves debut at Swindon Town, full back Kevin Ashley celebrates 12 months as a Molineux man with another appearance against Swindon.

He will be hoping for a reversal of last year's result at the County Ground, where Swindon won 1-0 — which in another coincidence was the losing scoreline Birmingham City suffered against West Bromwich Albion when Kevin made his first Blues appearance.

In yet another coincidence, though this one not perhaps so surprising, the thing that Kevin remembers most about both debuts was the butterflies-in-the-stomach syndrome.

He says: "I was very nervous for both games, probably more so for my Blues debut although I still regard that as my best experience so far in football.

"The most nervous I've ever felt, though, was before I made my home debut for Wolves against Plymouth. I really was uptight about that one, although once I got out there and the game started I was okay."

Nervousness is one thing that might surprise you about a man like Kevin, who sleeps so much you would expect him to be very relaxed. As well as getting in nine hours sleep a night he also has a three hour kip each afternoon after training.

He obviously needs his sleep, but he could be in for a rude awakening in January. That's when his girlfriend Amanda, whom Kevin lives with in Halesowen, is expecting the couple's first child.

They will probably need to invest in sound insulation for the bedroom if Kevin is to go on getting his required hours of sleep. The new arrival may also mean that Amanda will not be able to see Kevin in football action as often as she does at the moment.

Kevin says: "She's a big football fan and watches all

our games. On Saturday nights we always have a long chat about the afternoon's game and that really helps me unwind. Amanda's very supportive and a big help to me — and not nearly as critical as my dad. He's my biggest critic without doubt, although his criticism is always constructive. My family have always backed me with my football, right from



### • DREAM CAR •

*If he could afford one "Ash" would like a Lotus Elan convertible "a very tasty motor car"*

the time I was playing as a schoolboy."

Kings Heath born and an Aston Villa fan as a youngster, Kevin played for Birmingham Schools and the West Midlands County side but it was while he was playing for St Anne's in the Birmingham Boys League that he was spotted by Blues.

After working his way through the St Andrews apprentice system Kevin eventually established himself in the first team squad and played 59 league games for Blues before moving to Molineux last September, three months before his 22nd birthday.

He is now happily settled at Wolves, though he did not find it easy adjusting to life in his new surroundings. He says: Last season was a bit of a nightmare for me, mainly

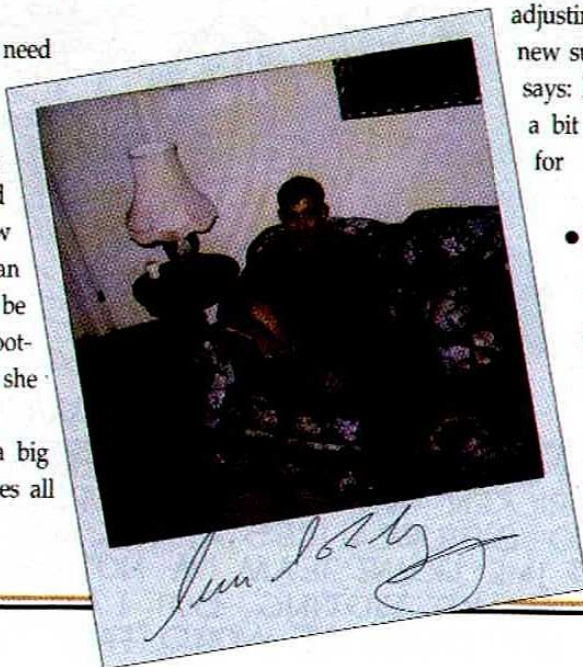
### • RELAXING •

*"We always have a long chat about the afternoon's game"*



### LOVES TO WATCH

*Lee Dixon; the best full-back in the country.*





through injuries. It took me longer to settle than I thought it would, but I'm happy at Molineux now and I'm really looking forward to the season.

"There's only one priority as far as I'm concerned and that's getting Wolves into the Superleague. The second division's going to be far more open this season and I think we've got a great chance of going up."

If Wolves do get promotion it will give Kevin the chance to come up against his favourite footballer, Arsenal and England full back Lee Dixon, in league action. Though he has not modelled his game on Dixon, Kevin rates the former Stoke City player very highly.

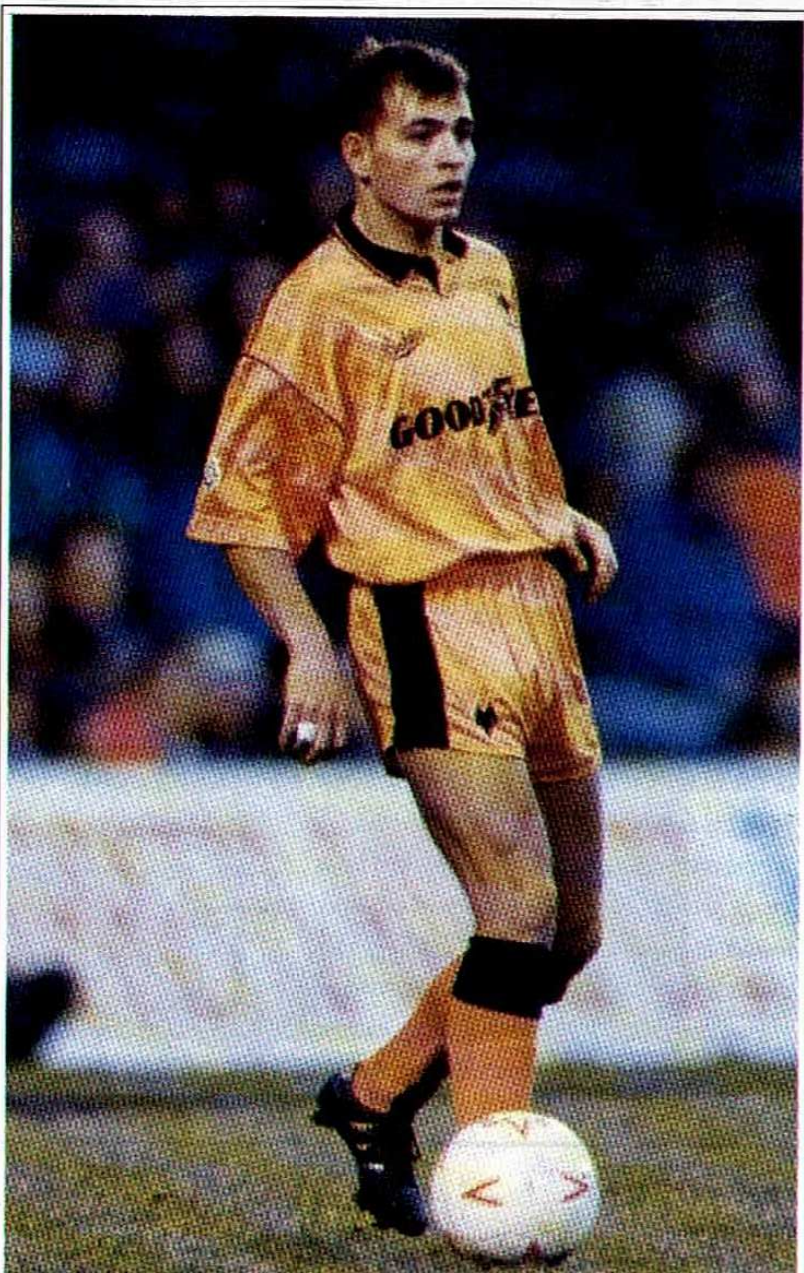
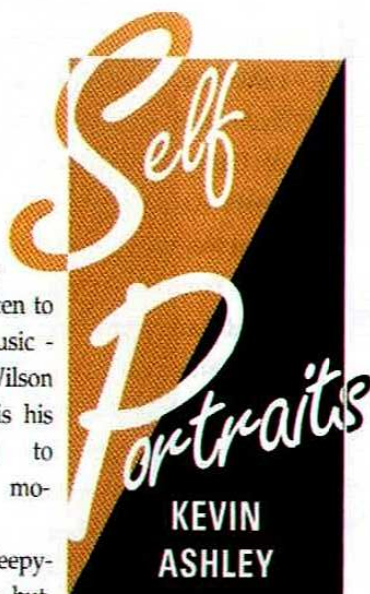
He says: "Dixon's an excellent full back - the best we've got in the country, in my opinion."

The only chance Kevin gets to watch Dixon at present is on TV, though the Arsenal man is not the main reason for the telly going on in the Ashley household — that honour goes to Sinbad the window cleaner in Kevin's favourite soap 'Brookside'. And though he seems to spend most of his life playing football, training or

**"There's only one priority as far as I'm concerned and that's getting Wolves into the Superleague"**

sleeping, he also finds time to listen to a lot of pop music - the latest Wilson Phillips album is his most listened to record at the moment.

A bit of a sleepy-head he may be, but our Kevin's a busy lad.



## SOUNDS

Kevin's favourite sound of the moment is the latest Wilson Phillips album



• KEVIN ASHLEY •





## WRIGHT STUFF

### BILLY WRIGHT'S WOLVES GREATS

#### No 4 EDDIE STUART

**W**hen Edward Albert Stuart was born in Johannesburg in May 1931 his parents could have had little idea that their offspring was to make a career for himself thousands of miles away from his homeland playing football for one of Europe's top sides in a Staffordshire town. As an eight year old Eddie began what was to be a long and fruitful soccer service. From his school team he progressed rapidly and went on to play for Rangers FC of Johannesburg. His coach there was Billy Butler who at one time was on the books of

Bolton Wanderers. It was Billy, together with Eddie's father, who persuaded him to join for Wolves, which he did, signing professional forms in January 1951. Eddie made his debut for the Reserves wearing the number five shirt at The Hawthorns in the final Central League fixture of that season. Coincidentally, almost a year later he made his first team debut as a stand-in centre forward against the Albion. Wolves' goal was scored by Eddie, and in an

eleven year relationship with Wolves it was to be the only one he scored. Bill Shorthouse, who was to be Eddie's full back partner on many occasions, made a similar achievement in that he too only got one goal in his long Wolves career. But back to Eddie. Until that first team debut he had spent most of the season playing at centre half for the Reserves. At the end of the season he returned home to celebrate his twenty first birthday with his family and friends. Unfortunately, whilst on holiday back home he picked up a virus which couldn't be diagnosed and found himself quite seriously ill. He had made it back to England but his condition was so bad that his mother was flown out by the club to be at his bedside. However,

Eddie was a tough young man and he made a full if somewhat slow recovery.

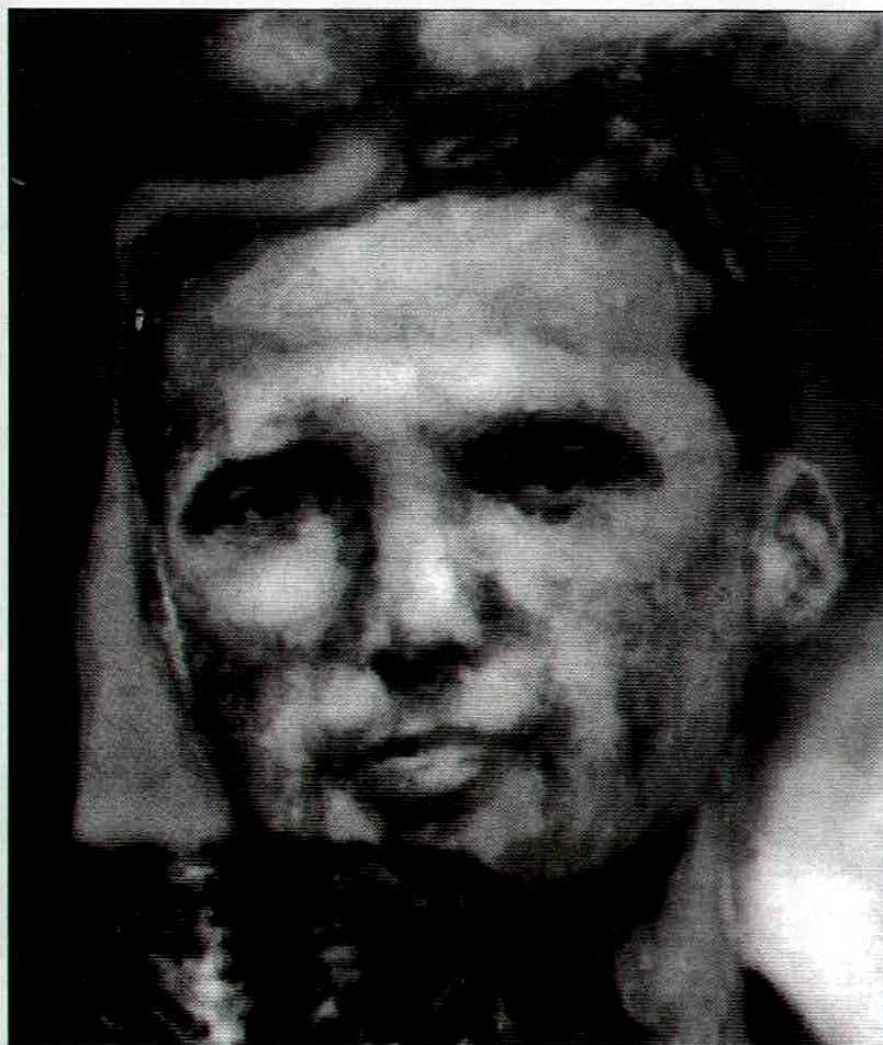
**I**t wasn't until just before the end of 1952 that Eddie was fit enough for a Reserve outing and when that time came it was as a full back that he returned to Molineux, a position he was to make virtually his own for eight seasons. In Wolves' championship-winning season of 1953/54 he played regularly in the Reserves until February when, following a 4-2 defeat at Chelsea, he was brought in to replace John Stuart. Eddie held his place in the final twelve games of the season, and though Wolves were crowned as League champions he hadn't made enough appearances to warrant earning a champions medal.

**T**he following three seasons saw him miss only 26 games in the league and cup, with Wolves finishing second, third and sixth in Division One. But season 1957/58 saw Eddie earn his first reward, that of a championship winner. He missed only two games that season. The following year Wolves repeated the feat, this time Eddie playing in all but four games. He, like the rest of the team, also made his European debut against Schalke 04 of West Germany, a tie we lost 4-3 on aggregate over the two legs.

1959/60 season was to be one of disappointment for Eddie. He did win a charity shield plaque at the beginning of the term, but midway through the year he lost his place to George Showell, and the full back whose play was described as hard but fair was denied the chance of winning an FA Cup winners medal. He came back though, and in the next two seasons played 74 times out of 93 first team games.

**T**he summer of 1962 saw Eddie end his long career with us and he moved to North Staffordshire to captain Stoke City. His experience and leadership helped the Potteries side to the





second division championship in his first season there. In August 1964 he moved a little further north to Tranmere with whom he spent two

**"... the full back whose play was described as hard but fair ..."**

seasons before winding up his league days with Stockport County. In his two seasons there he secured a fourth division championship medal. His final football days were spent as player-manager at Worcester City before he retired from soccer in 1970. Today Eddie still lives in Wolverhampton and runs a successful shop in Stoke. Few would doubt that he was one of the finest players, if not the finest, to come out of South Africa, and Wolves fans from the period will always remember his fair but no-nonsense style of play and accurate passing ability.

*by John Hendley*



*Eddie Stuart in action against Albion in 1952*

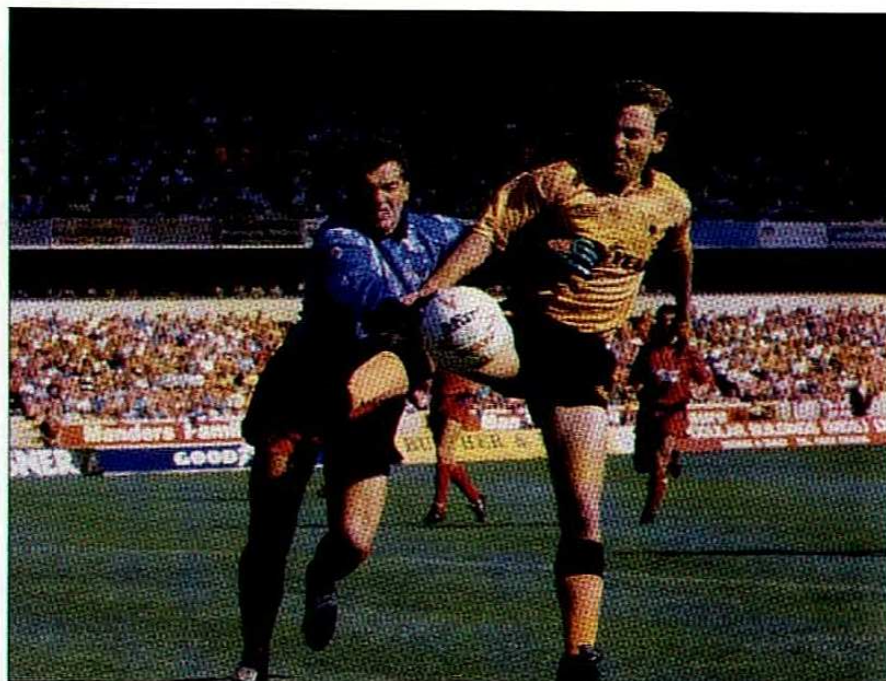
**EDDIE STUART'S FULL  
PLAYING RECORD FOR  
WOLVES  
1951-62**

League		FA Cup	
<i>Apps</i>	<i>Gls</i>	<i>Apps</i>	<i>Gls</i>
287	1	21	-
Euro		Others	
<i>Apps</i>	<i>Gls</i>	<i>Apps</i>	<i>Gls</i>
11	-	3	-

*The illustrations on this page are extracts from the limited edition print 'Wolverhampton Wanderers - The Greats' on sale from the club shop price £125*



# Picture Round Up



*Robbie Dennison gets some close attention from Ken Veysey (top)*

*Bully cracks one..... (centre)*

*.....Tim Steele does likewise (bottom)*

*Opposite: Hold on a minute. Bully and Andy Melville.*

*Pics: Action Images*









# Reserves & Youth

## PONTINS LEAGUE DIVISION 2

### Results

21/8	Hull City	A	D	1-1
28/8	Burnley	H	W	2-1
11/9	Blackpool	H	W	4-1

### Appearances

Paul Jones	3		
Brian Roberts	3		
Andy Thompson	3	1	
Nicky Clarke	3	1	
Colin Taylor	3		
Mark Burke	3	2	
Gary Bellamy	3		
Tim Steele	2		
Paul McLoughlin	2	1	
John Paskin	2	1	
Mark Turner	2	1	
Stuart Leeding	1		
Darren Smith	1	1	1
Rob Hindmarch	1		
Andy Harnett	1		

Wednesday 11th September 1991

*v Blackpool Home Won 4-1*

**Team:** P.Jones, Roberts, Thompson, Bellamy, Hindmarch, Clarke, Turner, Burke, Taylor, Harnett, Smith.

**Subs:** W.Jones, Leeding (neither used)

**Scorers:** Burke 2, Smith, Thompson

This Reserve fixture lived up to the old cliché of a game of two halves! In the first half we fell a goal behind after 13 minutes and we rarely looked like getting back on level terms. However, the pep-talk at half-time certainly worked wonders, for we equalised within a minute of the restart. Colin Taylor raced through the middle and fired in a good shot which was parried by their keeper. The rebound fell to Andy Harnett, who squared the ball across for Darren Smith to score from close range. This gave us the confidence to take control of the game. Mark Burke became influential in the midfield and his hard work was re-



**Darren Smith** –  
scorer against  
Blackpool

warded with two goals, and Andy Thompson scored as well to give us a comprehensive victory. Once again Paul Jones made a good impression in goal, dealing confidently with crosses, and making some vital saves during the game.

## Purity Youth League 1991/2

### Results:

17/8	Notts County	H	L	1-2
7/9	Coventry City	A	L	0-1
14/9	Peterborough	H	W	2-1

## Purity Youth League

### Appearances/Goalscorers

Andy De Bont	3		
Matt Clarke	3		
Gwyn Owen	3		
Danny Collier	3		
Jon Howard	3		
Mark Davies	3		
Sean Bradbury	3		
Scott Voice	3	2	
Steve Owen	3	1	
Andy Harnett	2		
Andy Wagstaff	2		
Gary Warmer	1		
Ray Scandrett	1		
Steve Pierce		3	
Steve Walker		1	

Saturday 7th September 1991

*v Coventry City Away Lost 0-1*

**Team:** De Bont, Clarke, G.Owen, Collier, Howard, Davies, Wagstaff, S.Owen, Bradbury, Voice, Harnett

**Subs:** Pierce (11), Bowers (not used)

Saturday 14th September 1991

*v Peterborough Home Won 2-1*

**Team:** De Bont, Clarke, G.Owen, Collier, Howard, Davies, Scandrett, S.Owen, Voice, Bradbury, Harnett

**Subs:** Walker (6), Pierce (11)

**Scorers:** Voice, S.Owen (pen).

We gained our first victory in the Purity League this season last Saturday against Peterborough at Aldersley. We opened brightly and took the lead after 13 minutes, when Scott Voice scored with a first-time shot after some good work and a fine cross by Sean Bradbury. However, our lead was short-lived, for the visitors equalised from the penalty spot after some holding in the penalty area. This seemed to knock our confidence and we were unable to get back into a rhythm to cause Peterborough too many problems. The second half followed on in the same way as the first, until 13 minutes from time when we too were awarded a penalty, this time for handball. Steve Owen ran up and coolly slotted the ball into the opposite corner to which the keeper dived. We managed to survive the last period of play to gain a hard-earned victory.



# T. WALL, VAUXHALL

**for all your Vauxhall  
requirements**

**Tel: 0384 288333**



● Poor old Albion. First their offices were flooded, and now a fire has caused considerable damage at the ground. I hope they've kept the insurance up to date. I think with the current manager it would be well worth checking the policy as well to see if they're insured against acts of Gould.

● And now a little poser (no not Keith Downing!). The manager of which local team has allegedly been taking boxing gloves into training to encourage his players to have a go at him? Apparently saying that he knows some of the players are not his greatest fans he has given them the chance to give vent to their feelings with a spot of sparring with him. However, this tactic got somewhat out of hand, and the manager in question had to beg for a disgruntled, transfer listed centre forward who had initially reluctantly donned the gloves, to be restrained! Anyone who has any ideas to who the club might be should send their answers on a postcard to The Crematorium...



*Spurs in double trouble*

"away" goal. In the event of the aggregate score being level, away goals count double, so will Hadjuk go through in the event of a one all aggregate score? Has FIFA considered this theory problem. I think we should be told.

● After all the talks recently of contracts being ended at the Hawthorns, an announcement has been made stressing that rumours that Bobby Gould and the Albion board are to star in

● After Spurs' European Cup Winners Cup tie with Hadjuk Split, what I want to know is if the goal scored by the Yugoslavs will count double if Spurs win the return at White Hart Lane 1-0. Hadjuk's "home" leg was of course played in Austria due to the domestic problems in Yugoslavia, so technically the goal by which they won the game was an

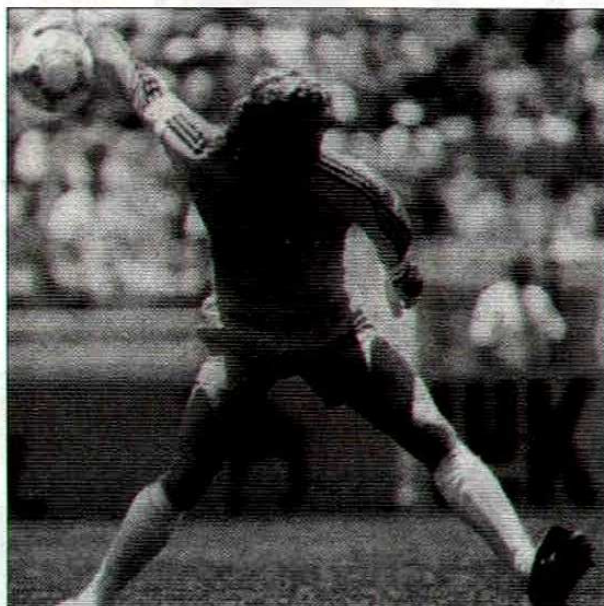


*The new Arnie?*

Terminator III are unfounded. This relieves Albion fans who were concerned that if, as rumoured, Gould returns to Wimbledon, his parting words will be "I'll be back".

● Good news for dentists, plastic surgeons and gum shield manufacturers - Toni Shumacher the former German national goalkeeper is making a comeback with Bayern Munich at the age of 37, having retired earlier in the year.

Shumacher, who knew more about high kicking than most Tiller Girls,



*Strikers Beware!*

is best remembered for his foul in the 1982 World Cup finals on Patrick Boltiston of France. The man who did for France - German relations what Ron Noades has done for race relations is back to help Bayern during an injury crisis. German forwards beware.

# World of Soccer

**WOLVES  
CLUBCALL  
0898  
12 11 03**

**TICKET  
LINE  
0898  
12 18 23**



**All the  
latest  
news from  
Molineux**

**Calls cost  
36p/minute  
cheap  
48p/minute  
other times**

BT Supercall, 1-9 Downham Road, London N1 5AA  
\*Clubcall is a service mark of British  
Telecommunications plc



# WOLVES CLUB SHOP

Anne, Karen and Joy, who will be selling Golden Goal tickets at today's game, model some of the shop range.

- Wolves Ski Hat £2.99
- Wolves Baseball Caps £5.99
- Wolves Scarves £3.99 (print)  
£4.99 (jaquard)
- Jaquard Jumpers £15.99
- Sweat Top £9.99
- Rugby Jerseys £19.99



- Wolves Replica Shirt £24.99
- Niagara Shirt £24.99
- Flame Shirt £24.99
- Wolves Shorts £11.99
- Tiger Cap £3.99



- Players Running Out Top £32.50
- Wolves Tracksuit £29.99
- Wolves Replica Shellsuit £49.99

## MEET OUR "GOLDEN GIRLS" TODAY...



...plus we have many selling points around the stadium for you to purchase Golden Goal Tickets:

- South bank Area •  
Gate 1 & rear Turnstiles
- Family Enclosure •  
Lower Concourse, near to Turnstiles & Snack Bar
- John Ireland Stand •  
Upper Concourse, near to Turnstiles

**BUY YOUR  
GOLDEN GOAL TICKETS  
TODAY.**

**... YOU COULD WIN £100!**



# KIT SPONSORS & PLAYERS RECORDS

## SEASON 1991-92

### MARK BURKE



Tony, Kevin, Susan  
& David Allen of  
Wombourne

	Lge	Cup
Apps.	0	0
Goals	0	0

### STEVE BULL



Bryan & Paul  
Yeubrey

	Lge	Cup
Apps.	7	0
Goals	6	0

### ROB HINDMARCH



Linthouse  
Wolves

	Lge	Cup
Apps.	0	0
Goals	0	0

### ANDY MUTCH



Impact Souvenirs &  
Promotions  
(Official suppliers to Club  
Shop) 0604 407609

	Lge	Cup
Apps.	7	0
Goals	3	0

### GARY BELLAMY



Colchester  
Wolves

	Lge	Cup
Apps.	0+1	0
Goals	0	0

### NICKY CLARKE



Telford Wolves  
Supporters Club

	Lge	Cup
Apps.	0	0
Goals	0	0

### PAUL COOK



Hatherton Wolves  
Supporters Club

	Lge	Cup
Apps.	7	0
Goals	0	0

### KEITH DOWNING



Parma, Bal, Deveena &  
Ranjit Sahota. Westside  
Fish Bar. (opp Kwiksave)  
12, Oldbury Rd, Blackheath

	Lge	Cup
Apps.	7	0
Goals	0	0

### MARK VENUS



Linthouse  
Wolves

	Lge	Cup
Apps.	7	0
Goals	0	0

### TIM STEELE



Brian Churm: Oakdale  
Building (Midlands) Ltd  
(0543) 505110

	Lge	Cup
Apps.	3+2	0
Goals	1	0

### MIKE STOWELL



Peter, Dave, Derek,  
Matthew, Simon &  
Karl of London Wolves

	Lge	Cup
Apps.	7	0
Goals	0	0

### COLIN TAYLOR



Steve English,  
Tamworth.  
Victoria Willetts

	Lge	Cup
Apps.	0	0
Goals	0	0

## POTENTIAL 1st TEAM

### PLAYERS

(£60 + V.A.T.)

#### ANDREW KELLY

Linthouse Wolves

#### STUART LEEDING

Linthouse Wolves

### TOM BENNETT



Aircoll  
Collections

	Lge	Cup
Apps.	7	00
Goals	00	00

## PLAYER STATS FOR SEASON 1990-91

	League		Cup			League		Cup	
	Apps	Gls	Apps	Gls		Apps	Gls	Apps	Gls
Ashley	15+1	-	0+1		Lange	3	-	-	-
Bartram	3	-	-	-	McLoughlin	2+4	-	0+1	-
Bellamy	26	3	5	-	Mutch	29	8	0+1	-
Bennett	24+2	-	3	-	Paskin	10+5	1	2	-
Birch	20	2	-	-	Roberts	17+4	-	3	-
Blake	2	-	-	-	Standcliffe	17	-	3	-
Bull	43	26	5	1	Steele	22+6	2	5	1
Burke	3+3	-	-	-	Stowell	39	-	5	-
Clarke	10+4	-	-	-	Taylor	6+9	2	2+2	-
Cook	42	6	4	1	Thompson	43+1	3	5	-
Dennison	41+1	5	4+1	-	Todd	6+1	-	-	-
Downing	31	1	4	-	Venus	6	-	-	-
Hindmarch	40	2	3+1	-	Westley	5	1	2	-
Jones	0+1	-	-	-	Opponents	1			



Date	Opponents	Attn	Score	Pos	1	2	3	4	5	6	7	8
Aug 17	Watford	13,547	2-0	-	Stowell	Ashley	Venus	Bennett	Madden	Downing	Birch	Cook
24	Charlton Ath	16,303	1-1	-	Stowell	Ashley	Venus	Bennett	Madden	Downing	Birch	Cook
31	Brighton & HA	10,621	3-3	9	Stowell	Ashley	Venus	Bennett	Madden	Downing	Birch	Cook
Sept 3	Port Vale	16,115	0-2	15	Stowell	Ashley	Venus	Bennett	Madden	Downing	Birch	Cook
7	Oxford U	12,549	3-1	9	Stowell	Ashley	Venus	Bennett	Madden	Downing	Steele	Cook
14	Newcastle U	20,195	2-1 <sup>1</sup>	15	Stowell	Ashley	Venus	Bennett	Madden	Downing	Steele	Cook
17	Cambridge U	6,552	1-2	10	Stowell	Ashley	Venus	Bennett	Madden	Downing	Steele	Cook
21	Swindon T											
24	Shrewsbury (RLC)											
28	Southend U											
Oct 5	Barnsley											
8	Shrewsbury (RLC)											
12	Middlesbrough											
19	Leicester C											
22	Grimsby T											
26	Tranmere R											
30	Blackburn R											
Nov 2	Plymouth A											
5	Bristol R											
9	Derby C.											
16	Millwall											
23	Ipswich T											
30	Portsmouth											
Dec 7	Sunderland											
14	Bristol C											
20	Port Vale											
26	Blackburn R											
28	Brighton & HA											
Jan 1	Grimsby T											
11	Charlton Ath											
18	Watford											
Feb 1	Leicester C											
8	Tranmere R											
15	Ipswich T											
22	Portsmouth											
29	Sunderland											
Mar 7	Bristol C											
11	Bristol R											
14	Plymouth A											
21	Derby Co											
28	Millwall											
31	Newcastle U											
Apr 4	Oxford U											
11	Cambridge U											
18	Swindon T											
20	Southend U											
25	Barnsley											
May 2	Middlesbrough											



## ODDS ON

The odds offered by Ladbrokes at Molineux for today's match against Swindon Town are as follows:

### HALF TIME/FULL TIME

HALF TIME	FULL TIME	ODDS
Wolves	Wolves	13/8
Wolves	Draw	16
Wolves	Swindon	25
Draw	Wolves	3
Draw	Draw	5
Draw	Swindon	7
Swindon	Wolves	18
Swindon	Draw	14
Swindon	Swindon	7

### CORRECT SCORE

Wolves	Swindon	ODDS
1	0	6
2	0	5
2	1	5
3	0	10
3	1	10
3	2	22
4	0	28
4	1	22
4	2	40
5	0	66
5	1	50
0	0	9
1	1	6
2	2	14
3	3	50
0	1	9
0	2	16
1	2	12
0	3	50
1	3	33
2	3	50

### TIME OF 1ST GOAL

TIME	ODDS
0-10 mins	9/2
11-20	9/2
21-30	9/2
31-40	9/2
41-50	5
51-60	9
61-70	12
71-80	16
81-Full Time	20
No goal scored	9

The odds for the player to score the first goal are on the back page, those not named on application

Any other named score 80/1

<sup>1</sup> Own goal - Scott

■ a t t h e e n d



Bull 1	Mutch 1	Dennison	Thompson	Steele
Bull 1	Mutch	Dennison	Thompson	Steele 7s
Bull 1	Mutch 2	Dennison	Thompson	Steele
Bull	Mutch	Dennison	Bellamy	Steele 11s
Bull	Mutch	Dennison	Paskin	Bellamy 2s
Bull	Mutch	Dennison	Birch 6s	Bellamy
Bull	Mutch	Dennison	Birch 11s	Bellamy

## Away Matches Ticket Information

Tuesday 24th September 1991

Rumbelows League Cup Round 2 First Leg

Wolves v Shrewsbury Town - Kick Off 7.30pm

This match is pay on the day, normal matchday prices. Season ticket holders can purchase their own seats from the John Ireland Stand Ticket Office and South Bank Terrace Ticket Office up until 4.30pm on Friday 20th September 1991.

Tuesday 8th October 1991

Rumbelows League Cup Round 2 Second Leg

Shrewsbury Town v Wolves - Kick off 7.30pm

THIS MATCH IS ALL TICKET FOR BOTH CLUBS

Terrace - £6.00

Seats - £7.00

Tickets will go on sale to SEASON TICKET HOLDERS ONLY from Wednesday 11th September 1991 until Wednesday 18th September 1991. Then to SEASON TICKET HOLDERS AND MEMBERS ONLY from the John Ireland Stand Ticket Office.

For Postal Applications: send application form Voucher "A" out of the back of your Season Ticket with a cheque or postal order payable to "Wolverhampton Wanderers 1986 Ltd" with a s.a.e. Please mark your envelope "Shrewsbury".

## HOW TO GET TO ROOTS HALL, SOUTHEND

**From the North and East:** Into Southend via A127. At roundabout turn right into Victoria Avenue for ground.

**From the South:** A13 to Queensway and turn left into Victoria Avenue for ground.

**Parking:** Car parks at ground. Street parking.

**Nearest railway station:** Prittlewell, Victoria or Southend Central

## DIVISION TWO 1991-92

(up to and including 18/9/91)

	Home					Away					A	Pts	GD
	P	W	D	L	F	A	W	D	L	F			
Middlesbro'	9	5	0	0	10	0	2	0	2	5	6	21	+9
Cambridge	7	2	1	1	5	4	3	0	0	9	5	16	+5
Swindon	7	3	1	0	9	4	1	1	1	8	6	14	+7
Ipswich	8	3	0	1	6	6	1	2	1	6	6	14	-
Southend	7	2	1	1	6	4	2	0	1	3	2	13	+3
Bristol C	8	3	2	0	8	5	0	2	1	3	4	13	+2
Leicester	7	3	0	0	6	1	1	1	2	3	7	13	+1
Blackburn	7	2	1	1	4	3	1	1	1	3	2	11	+2
Sunderland	8	1	2	0	4	2	2	0	3	11	11	11	+2
Wolves	7	1	1	1	4	4	2	1	1	8	6	11	+2
Charlton	7	2	0	2	6	7	1	2	0	5	3	11	+1
Grimsby	7	1	2	1	8	8	2	0	1	5	5	11	-
Brighton	8	1	1	2	6	7	2	1	1	5	4	11	-
Tranmere	7	1	2	0	7	6	1	2	1	6	5	10	+2
Derby	8	1	1	2	4	5	1	2	0	3	3	9	-1
Port Vale	9	1	3	0	5	4	1	0	4	4	7	9	-2
Portsmouth	7	2	1	0	2	0	0	2	2	2	7	9	-3
Barnsley	9	2	0	3	5	9	0	2	2	3	6	8	-7
Watford	7	0	0	3	2	7	2	1	1	6	3	7	-2
Plymouth	7	2	0	1	5	5	0	1	3	4	8	7	-4
Newcastle	8	0	3	1	6	7	1	0	3	5	9	6	-5
Millwall	7	1	0	2	6	5	0	2	2	6	8	5	-1
Oxford	7	1	1	2	6	6	0	0	3	2	7	4	-5
Bristol R	7	0	1	2	6	8	0	1	3	2	6	2	-6

## SEASON TICKET AND MATCHDAY PRICES 1991/92

After Saturday 21st September 1991

Ground Area	Season Ticket	Matchday Prices	Cost of 19 matches	Saving
John Ireland Stand				
Upper Tier ADULT	£120.00	£8.00	£152.00	£32.00
JUN/OAP	£95.00	£8.00	£152.00	£57.00
Family Enclosure*	£70.00	£4.50	£85.50	£15.50
South Bank ADULT	£91.00	£6.00	£114.00	£23.00
JUN/OAP	£62.00	£4.00	£76.00	£14.00

### John Ireland Stand Membership

A membership scheme will operate for the John Ireland Stand Upper Tier and also the Family Enclosure. The cost of the membership is £2.00 on application. Application forms are available from the Ticket Office. For postal applications please send cheques or postal orders payable to "Wolverhampton Wanderers 1986 Ltd." with s.a.e. Please mark the envelope "Membership Application".

### The Family Enclosure

The Family Enclosure is in the bottom tier of the John Ireland Stand. Admission to the Enclosure will be by payment at the turnstile at a cost of £4.50 per person. Adults must always produce a membership card (see above).

\*The Family Enclosure is only available to children 14 years and under, always accompanied by an adult. Therefore minimum sale of season tickets at any time must be two, except in the case of senior citizens. Children and adults on their own will not be admitted.

### Ticket Office Hours

Monday to Friday - 10:00am to 4:30pm

Matchdays - 10:00am until Kick-Off

o f t h e d a y



# TODAY'S LINE-UPS

## WOLVES

1. Mike STOWELL
2. Kevin ASHLEY
3. Mark VENUS
4. Tom BENNETT
5. Lawrie MADDEN
6. Keith DOWNING
7. Tim STEELE
8. Paul COOK
9. Steve BULL
10. Andy MUTCH
11. Robbie DENNISON
- 12.
- 14.

## SWINDON TOWN

1. Micky HAMMOND
2. Tom JONES
3. Adrian VIVEASH
4. Glenn HODDLE
5. Colin CALDERWOOD
6. Sean TAYLOR
7. Micky HAZARD
8. Duncan SHEARER
9. Fitzroy SIMPSON
10. Ross MacLAREN
11. Steve WHITE
- 12.
- 14.

1st  
goal  
odds

## TODAY'S REFEREE:

Tony Ward of New Southgate, London  
Age: 49  
Progressed through the local South East Counties League, Spartan League, Athenian League and Isthmian League.  
His hobbies include Baseball and the theatre.

33

33

33

40

16

12

6

3

9/2

9

## LINESMEN:

R.J. Horsewell (Red Flag) & B.J. Rudkin (Yellow Flag)

## TODAY'S MASCOT:

Today's mascot is 9 year old Simon Eard who attends the Royal Wolverhampton School. His favourite player is Steve Bull.



## MATCHBALL SPONSORS:

Petford Tools

## TRAINER'S BENCH SPONSORS:

Parkfield Paper  
(Midlands) Ltd

## PENALTY SHOOT-OUT SPONSORS

Cook & Hickman

16

40

16

33

25

9

## HALFTIME SCOREBOARD

9

12

25

7

A Bristol R v Oxford U	L Watford v Charlton A
B Derby Co v Brighton & HA	M Aston Villa v Nottingham Forest
C Ipswich T v Bristol C	N Everton v Coventry C
D Leicester C v Blackburn R	P Leeds U v Liverpool
E Millwall v Newcastle U	Q Manchester U v Luton T
F Plymouth A v Middlesbrough	R Q.P.R. v Chelsea
G Port Vale v Southend U	S Chester C v W.B.A.
H Portsmouth v Cambridge U	T Hartlepool U v Birmingham C
J Sunderland v Grimsby T	U Walsall v Hereford U
K Tranmere R v Barnsley	